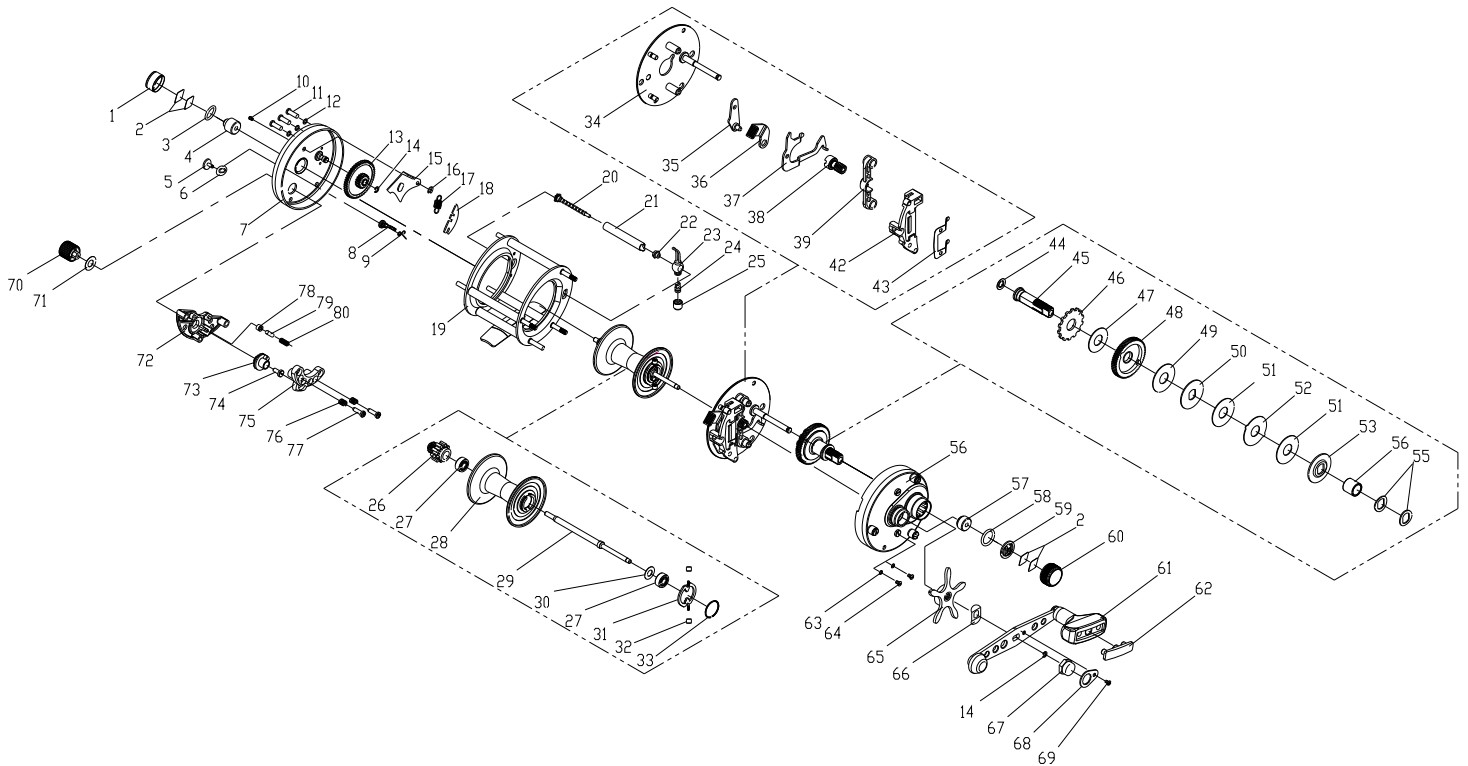




**OMOTO**<sup>®</sup>  
**REELS**  
The Advantage Over The Competition

# PARTS LIST FOR CHIEF 6000CSM



## NO Part Name

- 1 Left cast control cap
- 2 Base washer(x4)
- 3 O-ring
- 4 Bushing
- 5 Click switch
- 6 Washer
- 7 Left side plate
- 8 Click pawl
- 9 Click pawl spring
- 10 Pin
- 11 Screw(x3)
- 12 Washer(x3)
- 13 Oscillation Cog. wheel
- 14 E-Clip (x2)
- 15 Click retainer
- 16 E-Clip
- 17 Spring
- 18 Lock plate
- 19 Frame assembly
- 20 Worm shaft assembly
- 21 Line guide
- 22 Bushing
- 23 Level wind assembly
- 24 Level wind pawl
- 25 Level wind nut
- 26 Line alarm cog wheel
- 27 Ball bearing (x2)

## NO Part Name

- 28 Spool
- 29 Spool Shaft
- 30 Washer
- 31 Centrifugal brake support
- 32 Centrifugal brake(x2)
- 33 C clip
- 34 Brake plate assembly
- 35 Plate
- 36 Release trigger
- 37 Clutch plate
- 38 Pinion gear
- 39 Yoke
- 42 Support plate
- 43 Spring plate
- 44 Spring washer
- 45 Drive shaft
- 46 Release gear
- 47 Drive washer
- 48 Drive gear
- 49 Drag washer
- 50 Key washer
- 51 Drag washer (x2)
- 52 Ear washer
- 53 Key washer
- 55 Spring washer (x2)

## NO Part Name

- 56 Right side plate assembly + one-way bearing
- 57 Bushing
- 58 O-ring
- 59 Clip plate
- 60 Right cast control cap
- 61 Single handle assembly
- 62 Handle knob cap
- 63 Washer (x2)
- 64 Screw (x2)
- 65 Star drag
- 66 Spacer
- 67 Handle nut
- 68 Handle nut retainer
- 69 Handle nut retainer screw
- 70 Switch
- 71 Washer
- 72 Magnetic seat
- 73 Lifter
- 74 Screw
- 75 Magnetic assembly
- 76 Spring (x2)
- 77 Screw (x2)
- 78 Click
- 79 Pin
- 80 Spring