

# CHIEF SERIES **owner's manual**

6000CS, 6000CT, 6000CSM, 6000CTM



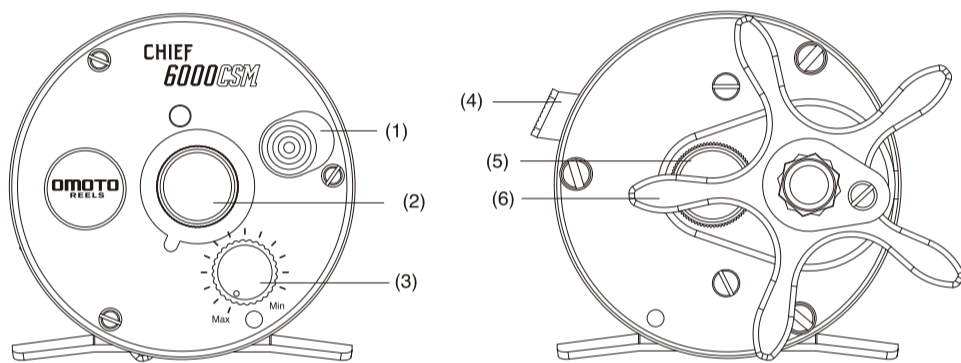
www.omoto.com.tw

**Congratulations** on your purchase of an OMOTO Reel. OMOTO Reels are simple to operate, even though they are precision machined instruments. Before using your OMOTO Reel, please take a few moments to read this instruction guide as it will help you to get the best performance.

**WARRANTY:** OMOTO warrants to the original purchaser that this product will be free from non-conformities in material or workmanship for the period of one year from the date of purchase. Please keep your receipt for all warranty claims. To request warranty repairs (or non-warranty service) send your reel, postage to **OMOTO agent nearest you or headquarters in Taiwan.**

**OMOTO FISHING TACKLE CO., LTD.**

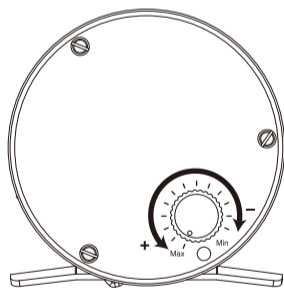
No.120, Dongying 7th St., East District, Taichung City 40153, Taiwan  
 TEL:+886-4-22155958 FAX:+886-4-22135119  
 e-mail:omoto@omoto.com.tw



- (1) Spool click
- (2) Mechanical brake (Left)
- (3) Mag brake (Selected models)
- (4) Free spool button
- (5) Mechanical brake (Right)
- (6) Adjustment star of drag

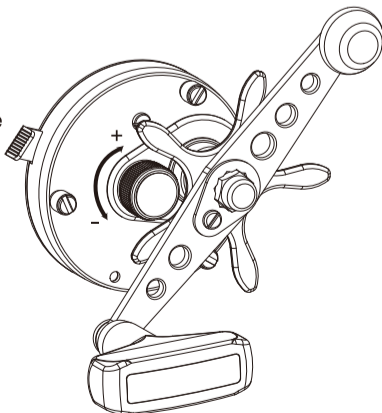
## MAG BRAKE (selected models):

OMOTO's Mag Brake combines the magnetic brake and mechanical brake into one, easy adjusting dial. With the rod, reels, line and lure properly assembled, depress the spool and set the Mag Brake so the lure DOES NOT drop under its own weight or at the maximum setting. Maximize casting distance by reducing the brake one to two clicks at a time.



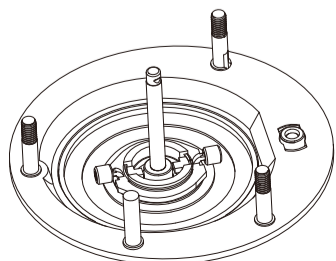
## MECHANICAL BRAKE (Right side)

For maximum casting distance and minimal tendency to over run it is necessary to adjust the mechanical brake to the weight of the lure. With the rod-reel-line-lure properly assembly, depress the spool and set the mechanical brake so that the lure slowly descends approximately 25cm (10") when the rod tip is flexed gently. If the lure does not move the mechanical brake is too tight. If it falls to the ground the brake is too loose.



## CENTRIFUGAL BRAKE

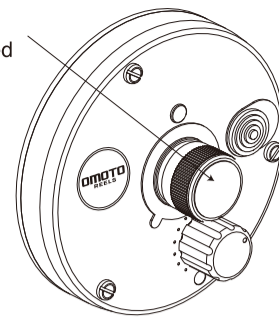
Centrifugal brake weights are snapped onto retainer pins attached to the spool. As the spool spins, centrifugal force creates pressure from the weights on the brake drum attached to the frame. This pressure prevents the spool from over running at the start of the cast. Be sure to slide the brake weights inward on their pins before re-assembling your reel.



## MECHANICAL BRAKE (Left side)

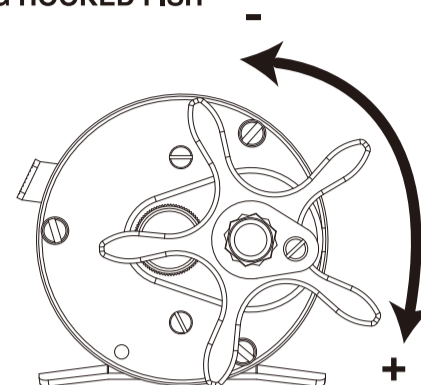
The Mechanical brake adjustment on the left side plate and the centrifugal brake work together to virtually eliminate backlash. The speed of spool rotation and side play are adjustable with the calibrated dial on the side plate which serves as a memory device in matching various bait, line and rod combinations.

Starting with the scale set at the "0" position, gradually increase the setting until you reach the proper setting suited to your casting ability.



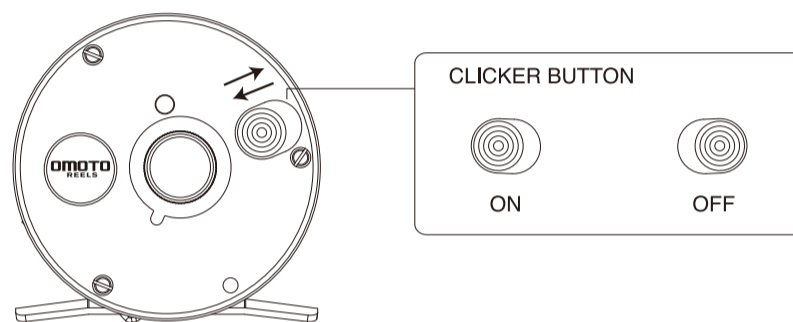
## DRAG-FOR HOOKING AND CONTROLLING HOOKED FISH

Set by turning the adjustment star on the side of the reel handle, the drag should be adjusted to approximately one third of the breaking test of the line being used. This is best done by tying the line to spring scales for precise adjustment. Be sure reel is first mounted on a rod and the line run through rod guides before tying to scales. The drag should always be released before the line reaches its breaking point. Some techniques require higher settings. Any adjustment above half the line strength risks line breakage.



## SPOOL CLICK

This simple on-off slide switch engages an audible alarm to alert the angler that line is moving from the spool. Most used when trolling or still fishing Alarm must be disengaged when casting and should also be released when retrieving or fighting a gamefish.

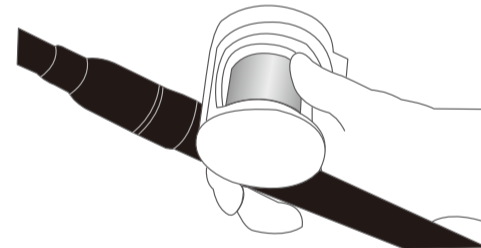


## BASIC CASTING

With a baitcaster, clamp the thumb of your rod hand hard on the spool to stop it turning, and put the reel into free-spool mode, with most baitcasters, clamping your thumb onto the spool depresses a bar that disengages it.

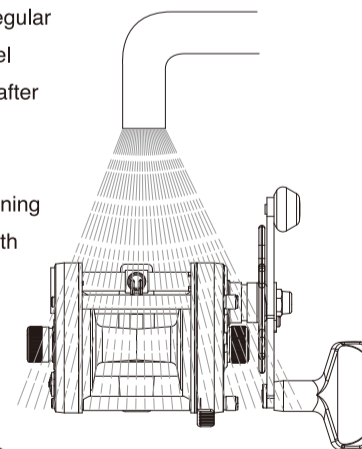
## LINE CONTROL:

To slow down a bait fished on a baitcaster, apply gentle thumb pressure to the revolving spool (but beware of friction burns), overruns are rare with modern reels because they have magnetic braking systems.

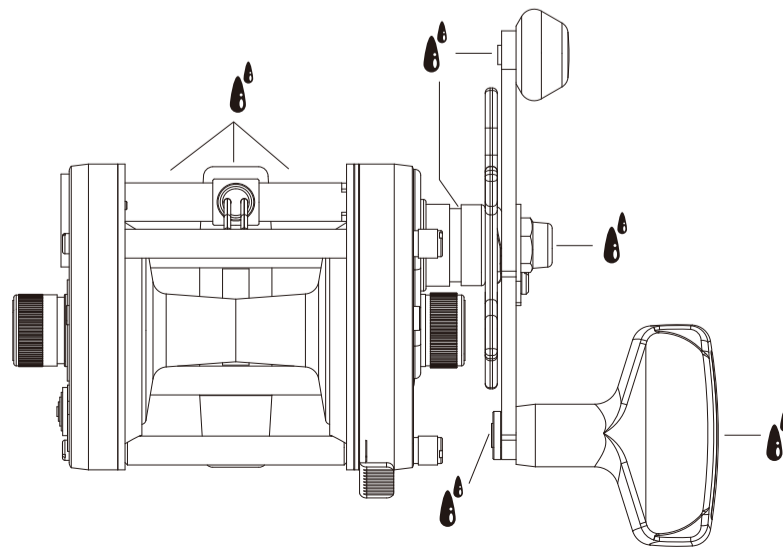


## MAINTENANCE

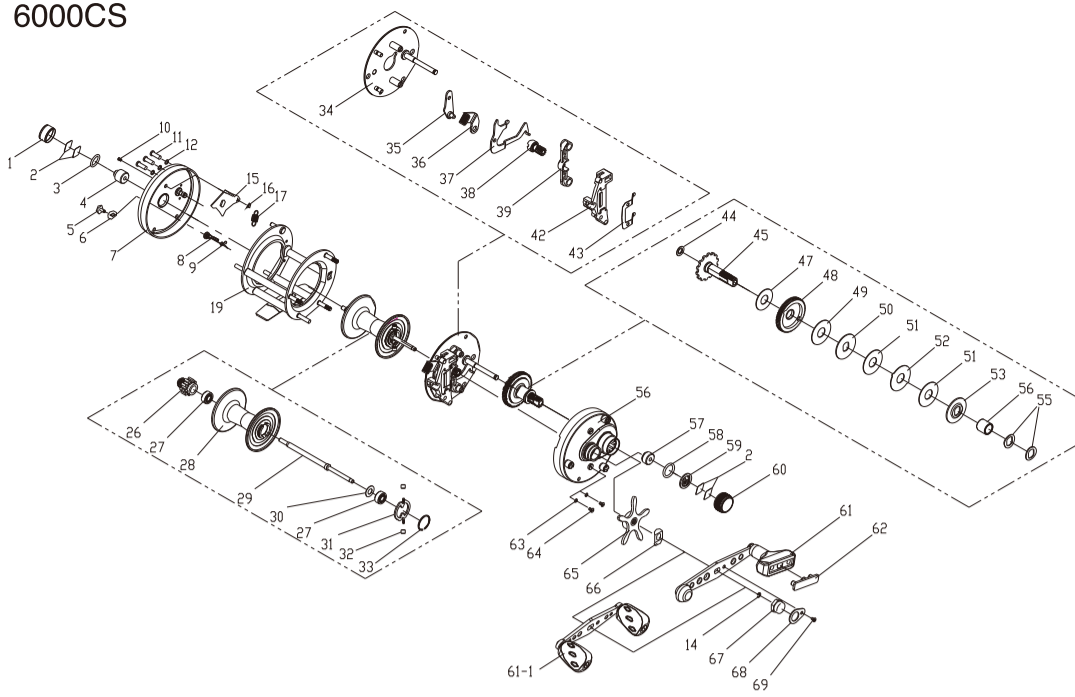
As with any piece of precision product, your 6600 will require regular maintenance. Lack of this could void warranty. To keep your reel working at peak efficiency, it should be cleaned and lubricated after each use. Gently rinse the reel in fresh water, wipe it dry and lubricate according to the accompanying chart. At least once a season your reel should be disassembled for a thorough cleaning and re-lubrication. Refer to the exploded parts view supplied with your reel.



## Lubrication:

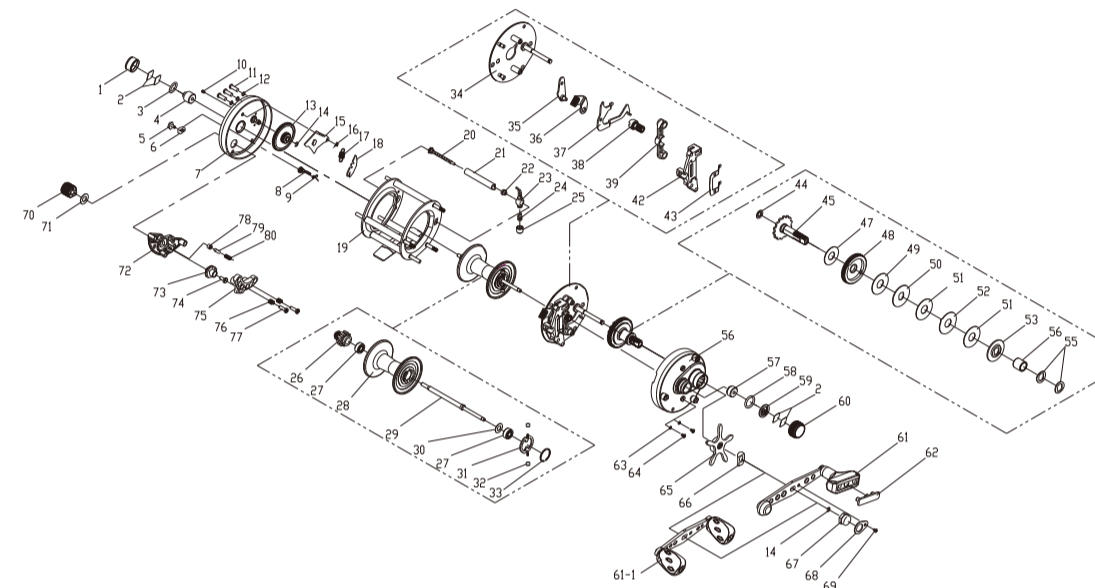


6000CS



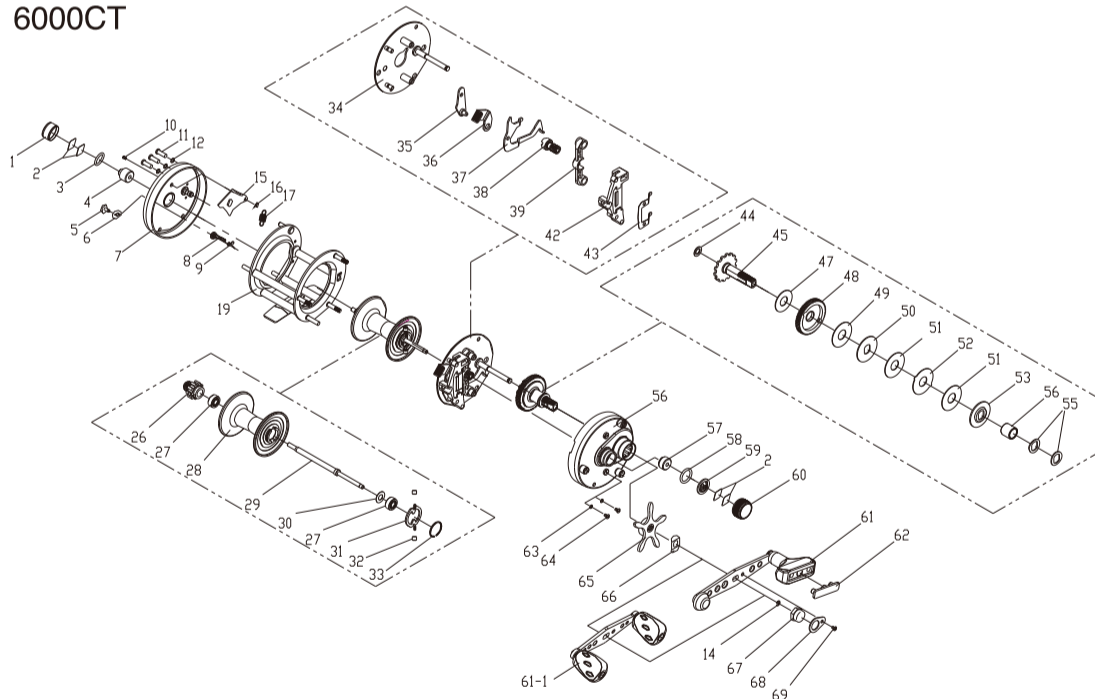
NO	Part Name	NO	Part Name	NO	Part Name
1	Left cast control cap	24	Level wind pawl	50	Key washer
2	Base washer(x4)	25	Level wind nut	51	Drag washer (x2)
3	O-ring	26	Line alarm cog wheel	52	Ear washer
4	Bushing	27	Ball bearing (x2)	53	Key washer
5	Click switch	28	Spool	55	Spring washer (x2)
6	Washer	29	Spool shaft	56	Right side plate assembly + one-way bearing
7	Left side plate	30	Washer	57	Bushing
8	Click pawl	31	Centrifugal brake support	58	O-ring
9	Click pawl spring	32	Centrifugal brake (x2)	59	Clip plate
10	Pin	33	C clip	60	Right cast control cap
11	Screw(x3)	34	Brake plate assembly	61	Single handle assembly
12	Washer(x3)	35	Plate	61-1	Double Knob Handle Assembly
13	Oscillation cog. wheel	36	Release trigger	62	Handle knob cap
14	E-Clip (x2)	37	Clutch plate	63	Washer (x2)
15	Click retainer	38	Pinion gear	64	Screw (x2)
16	E-Clip	39	Yoke	65	Star drag
17	Spring	42	Support plate	66	Spacer
18	Lock plate	43	Spring plate	67	Handle nut
19	Frame assembly	44	Spring washer	68	Handle nut retainer
20	Worm shaft assembly	45	Drive shaft	69	Handle nut retainer screw
21	Line guide	47	Drive washer		
22	Bushing	48	Drive gear		
23	Level wind assembly	49	Drag washer		

6000CSM



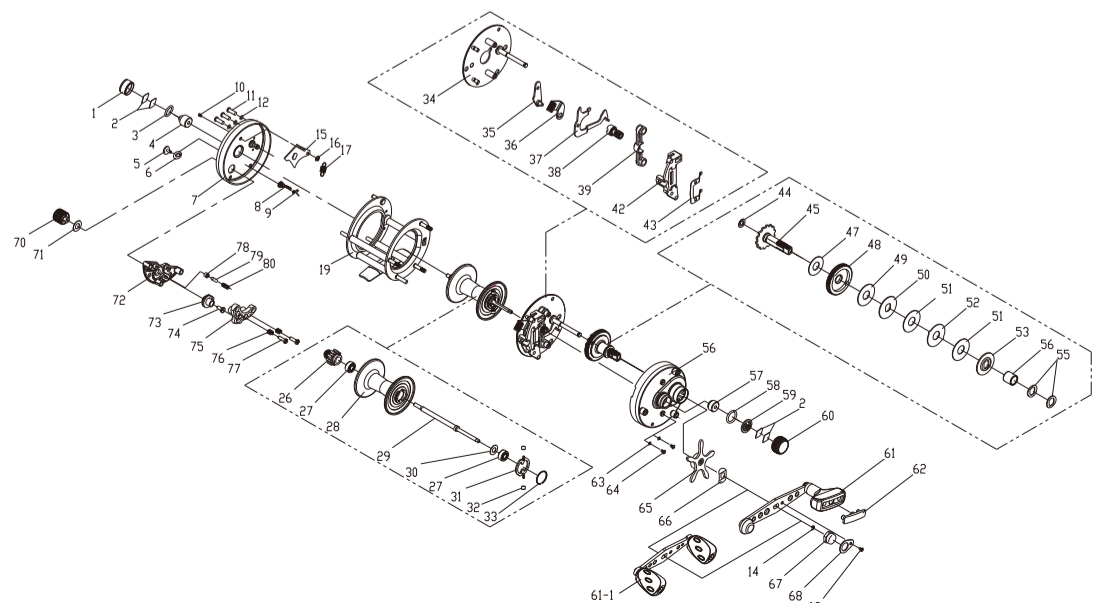
NO	Part Name	NO	Part Name	NO	Part Name
1	Left cast control cap	28	Spool	58	O-ring
2	Base washer(x4)	29	Spool Shaft	59	Clip plate
3	O-ring	30	Washer	60	Right cast control cap
4	Bushing	31	Centrifugal brake support	61	Single handle assembly
5	Click switch	32	Centrifugal brake(x2)	61-1	Double Knob Handle Assembly
6	Washer	33	C clip	62	Handle knob cap
7	Left side plate	34	Brake plate assembly	63	Washer (x2)
8	Click pawl	35	Plate	64	Screw (x2)
9	Click pawl spring	36	Release trigger	65	Star drag
10	Pin	37	Clutch plate	66	Spacer
11	Screw(x3)	38	Pinion gear	67	Handle nut
12	Washer(x3)	39	Yoke	68	Handle nut retainer
13	Oscillation Cog. wheel	42	Support plate	69	Handle nut retainer screw
14	E-Clip (x2)	43	Spring plate	70	Switch
15	Click retainer	44	Spring washer	71	Washer
16	E-Clip	45	Drive shaft	72	Magnetic seat
17	Spring	47	Drive washer	73	Lifter
18	Lock plate	48	Drive gear	74	Screw
19	Frame assembly	49	Drag washer	75	Magnetic assembly
20	Worm shaft assembly	50	Key washer	76	Spring (x2)
21	Line guide	51	Drag washer (x2)	77	Screw (x2)
22	Bushing	52	Ear washer	78	Click
23	Level wind assembly	53	Key washer	79	Pin
24	Level wind pawl	55	Spring washer (x2)	80	Spring
25	Level wind nut	56	Right side plate assembly + one-way bearing		
26	Line alarm cog wheel				
27	Ball bearing (x2)	57	Bushing		

6000CT



NO	Part Name	NO	Part Name	NO	Part Name
1	Left cast control cap	29	Spool shaft	52	Ear washer
2	Base washer(x4)	30	Washer	53	Key washer
3	O-ring	31	Centrifugal brake support	55	Spring washer (x2)
4	Bushing	32	Centrifugal brake(x2)	56	Right side plate assembly + one-way bearing
5	Click switch	33	C clip	57	Bushing
6	Washer	34	Brake plate assembly	58	O-ring
7	Left side plate	35	Plate	59	Clip plate
8	Click pawl	36	Release trigger	60	Right cast control cap
9	Click pawl spring	37	Clutch plate	61	Single handle assembly
10	Pin	38	Pinion gear	61-1	Double Knob Handle Assembly
11	Screw(x3)	39	Yoke	62	Handle knob cap
12	Washer(x3)	42	Support plate	63	Washer (x2)
14	E-Clip(x2)	43	Spring plate	64	Screw (x2)
15	Click retainer	44	Spring washer	65	Star drag
16	E-Clip	45	Drive shaft	66	Spacer
17	Spring	47	Drive washer	67	Handle nut
19	Frame assembly	48	Drive gear	68	Handle nut retainer
26	Line alarm cog wheel	49	Drag washer	69	Handle nut retainer screw
27	Ball bearing (x2)	50	Key washer		
28	Spool	51	Drag washer(x2)		

6000CTM



NO	Part Name	NO	Part Name	NO	Part Name
1	Left cast control cap	33	C clip	60	Right cast control cap
2	Base washer(x4)	34	Brake Plate assembly	61	Single handle assembly
3	O-ring	35	Plate	61-1	Double Knob Handle Assembly
4	Bushing	36	Release Trigger	62	Handle knob cap
5	Click switch	37	Clutch plate	63	Washer (x2)
6	Washer	38	Pinion gear	64	Screw (x2)
7	Left side plate	39	Yoke	65	Star drag
8	Click pawl	42	Support plate	66	Spacer
9	Click pawl spring	43	Spring plate	67	Handle nut
10	Pin	44	Spring washer	68	Handle nut retainer
11	Screw(x3)	45	Drive shaft	69	Handle nut retainer screw
12	Washer(x3)	47	Drive washer	70	Switch
14	E-Clip(x2)	48	Drive gear	71	Washer
15	Click Retainer	49	Drag washer	72	Magnetic seat
16	E-Clip	50	Key washer	73	Lifter
17	Spring	51	Drag washer (x2)	74	Screw
19	Frame assembly	52	Ear washer	75	Magnetic assembly
26	Line alarm cog wheel	53	Key washer	76	Spring (x2)
27	Ball Bearing (x2)	55	Spring washer (x2)	77	Screw (x2)
28	Spool	56	Right side plate assembly + one-way bearing	78	Click
29	Spool shaft	57	Bushing	79	Pin
30	Washer	58	O-ring	80	Spring
31	Centrifugal brake support	59	Clip plate		
32	Centrifugal brake (x2)				