

CHIEF SERIES **owner's manual**

7000CS,7000CT,7000CSM,7000CTM



www.omoto.com.tw



Congratulations on your purchase of an OMOTO Reel. OMOTO Reels are simple to operate, even though they are precision machined instruments. Before using your OMOTO Reel, please take a few moments to read this instruction guide as it will help you to get the best performance.

WARRANTY:OMOTO warrants to the original purchaser that this product will be free from non-conformities in material or workmanship for the period of one year from the date of purchase. Please keep your receipt for all warranty claims. To request warranty repairs (or non-warranty service) send your reel, postage to **OMOTO agent nearest you or headquarters in Taiwan.**

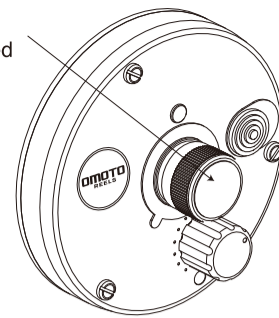
OMOTO FISHING TACKLE CO., LTD.

No.120,Dongying 7th St., East District,Taichung City 40153, Taiwan
TEL:+886-4-22155958 FAX:+886-4-22135119
e-mail:omoto@omoto.com.tw

MECHANICAL BRAKE (Left side)

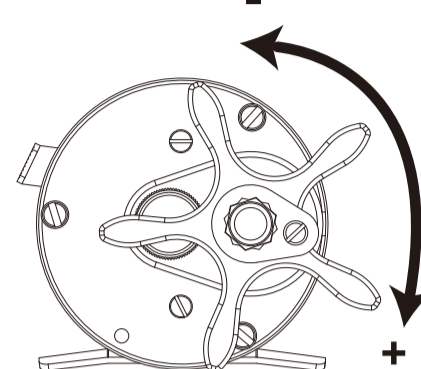
The Mechanical brake adjustment on the left side plate and the centrifugal brake work together to virtually eliminate backlash. The speed of spool rotation and side play are adjustable with the calibrated dial on the side plate which serves as a memory device in matching various bait, line and rod combinations.

Starting with the scale set at the "0" position, gradually increase the setting until you reach the proper setting suited to your casting ability.



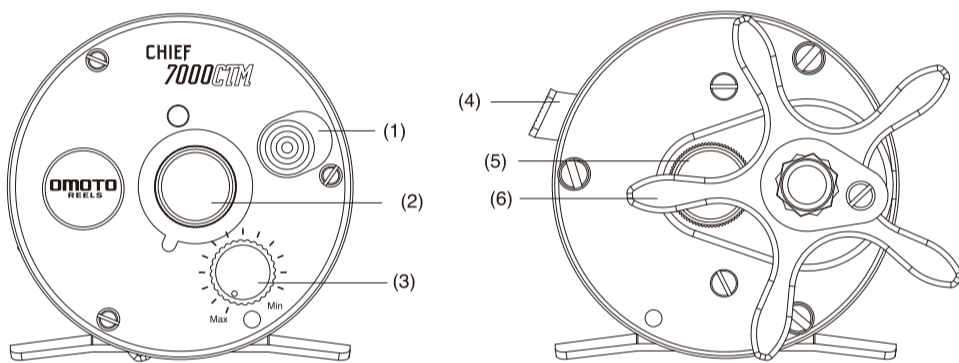
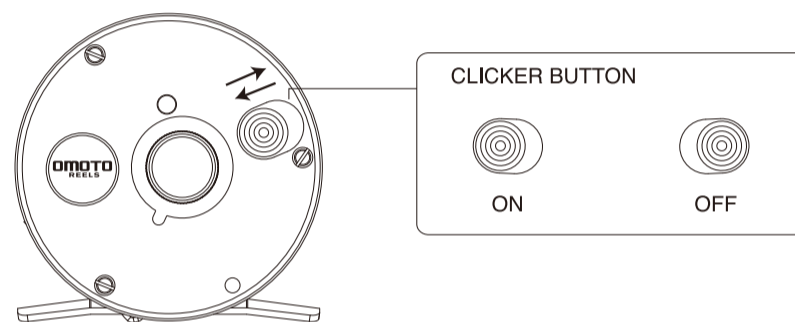
DRAG-FOR HOOKING AND CONTROLLING HOOKED FISH

Set by turning the adjustment star on the side of the reel handle, the drag should be adjusted to approximately one third of the breaking test of the line being used. This is best done by tying the line to spring scales for precise adjustment. Be sure reel is first mounted on a rod and the line run through rod guides before tying to scales. The drag should always be released before the line reaches its breaking point. Some techniques require higher settings. Any adjustment above half the line strength risks line breakage.



SPOOL CLICK

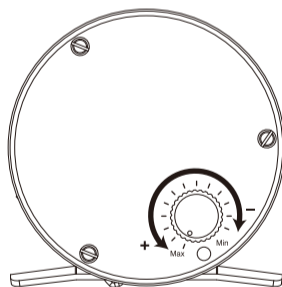
This simple on-off slide switch engages an audible alarm to alert the angler that line is moving from the spool. Most used when trolling or still fishing Alarm must be disengaged when casting and should also be released when retrieving or fighting a gamefish.



- (1) Spool click
- (2) Mechanical brake (Left)
- (3) Mag brake (Selected models)
- (4) Free spool button
- (5) Mechanical brake (Right)
- (6) Adjustment star of drag

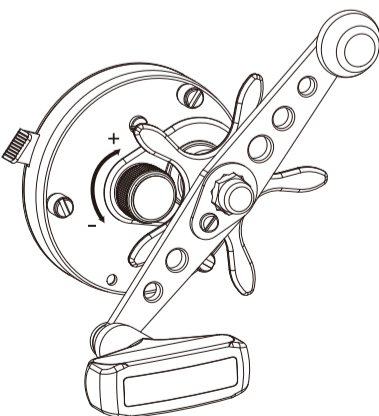
MAG BRAKE (selected models):

OMOTO's Mag Brake combines the magnetic brake and mechanical brake into one, easy adjusting dial. With the rod, reels, line and lure properly assembled, depress the spool and set the Mag Brake so the lure DOES NOT drop under its own weight or at the maximum setting. Maximize casting distance by reducing the brake one to two clicks at a time.



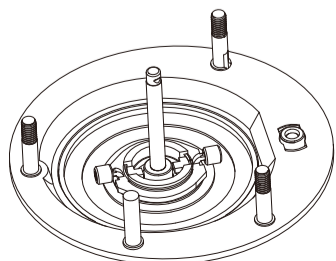
MECHANICAL BRAKE (Right side)

For maximum casting distance and minimal tendency to over run it is necessary to adjust the mechanical brake to the weight of the lure. With the rod-reel-line-lure properly assembly, depress the spool and set the mechanical brake so that the lure slowly descends approximately 25cm (10") when the rod tip is flexed gently. If the lure does not move the mechanical brake is too tight. If it falls to the ground the brake is too loose.



CENTRIFUGAL BRAKE

Centrifugal brake weights are snapped onto retainer pins attached to the spool. As the spool spins, centrifugal force creates pressure from the weights on the brake drum attached to the frame. This pressure prevents the spool from over running at the start of the cast. Be sure to slide the brake weights inward on their pins before re-assembling your reel.

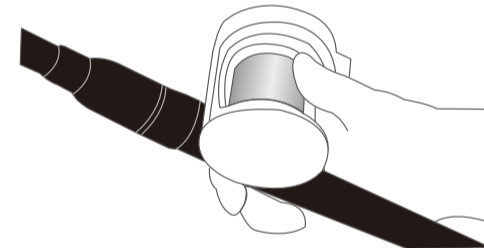


BASIC CASTING

With a baitcaster, clamp the thumb of your rod hand hard on the spool to stop it turning, and put the reel into free-spool mode, with most baitcasters, clamping your thumb onto the spool depresses a bar that disengages it.

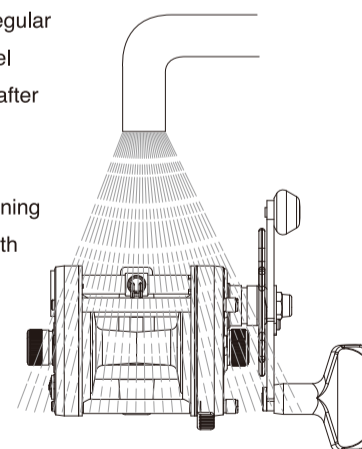
LINE CONTROL:

To slow down a bait fished on a baitcaster, apply gentle thumb pressure to the revolving spool (but beware of friction burns), overruns are rare with modern reels because they have magnetic braking systems.

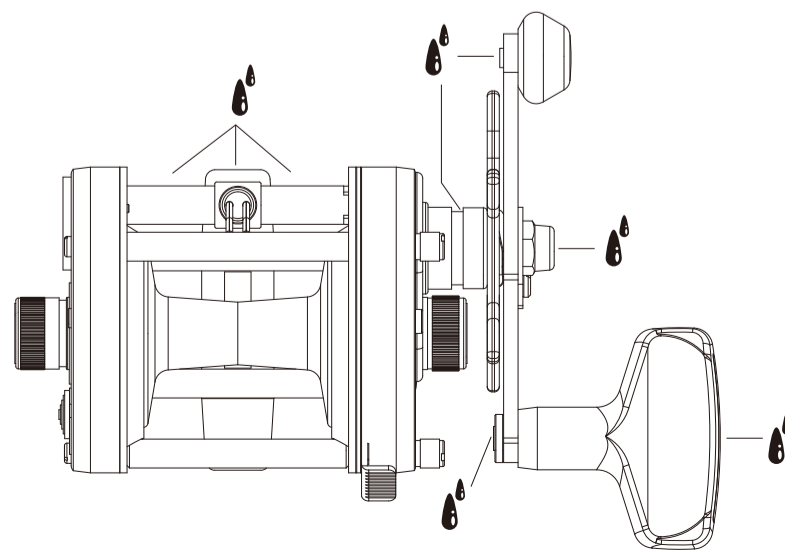


MAINTENANCE

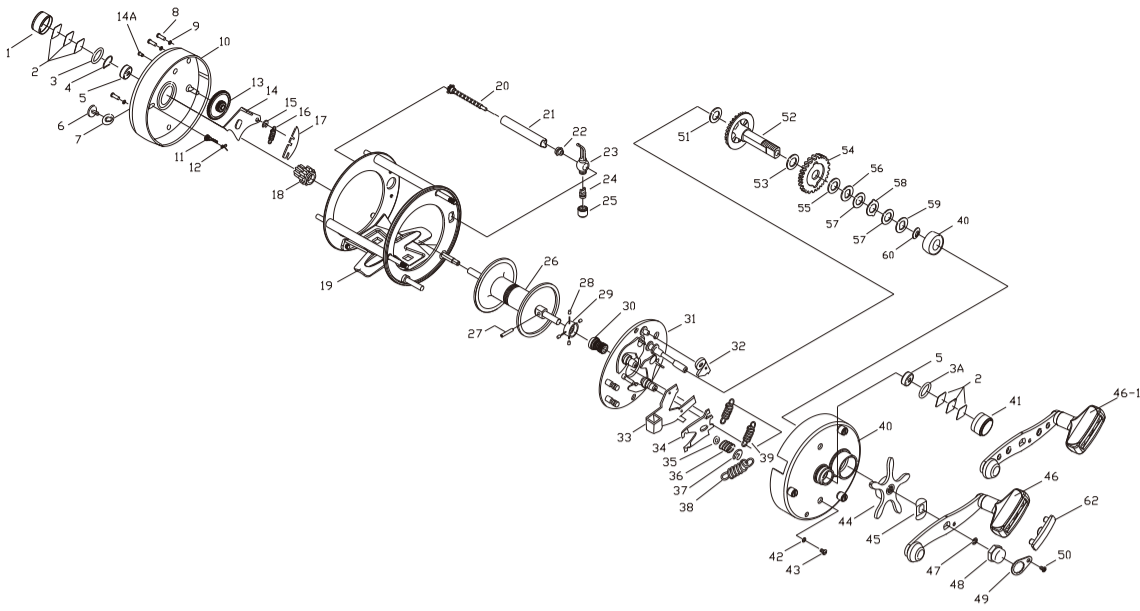
As with any piece of precision product, your 6600 will require regular maintenance. Lack of this could void warranty. To keep your reel working at peak efficiency, it should be cleaned and lubricated after each use. Gently rinse the reel in fresh water, wipe it dry and lubricate according to the accompanying chart. At least once a season your reel should be disassembled for a thorough cleaning and re-lubrication. Refer to the exploded parts view supplied with your reel.



Lubrication:

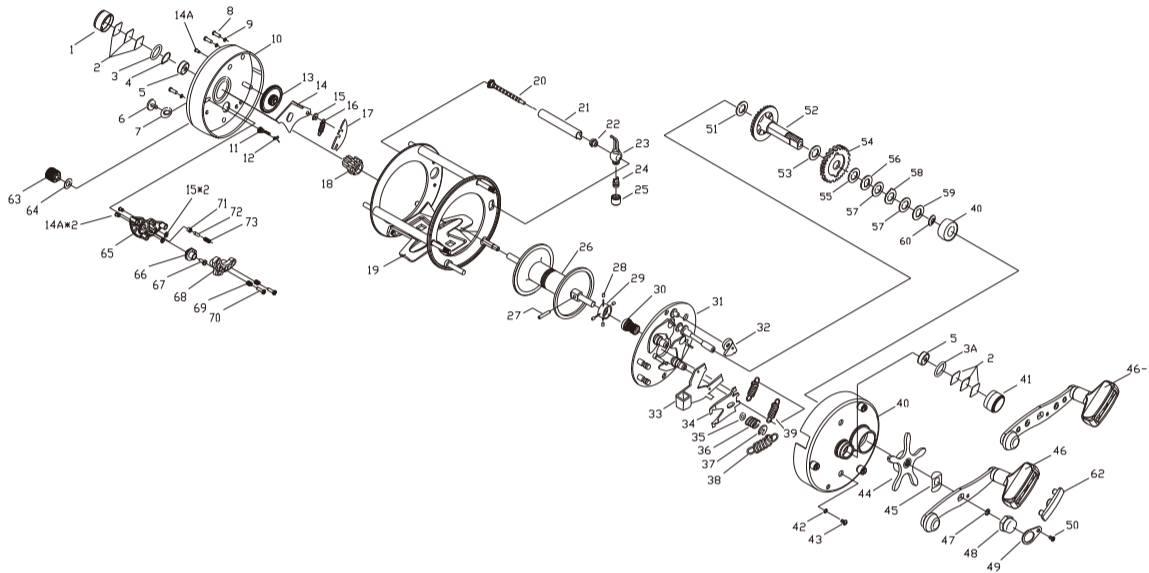


7000CS



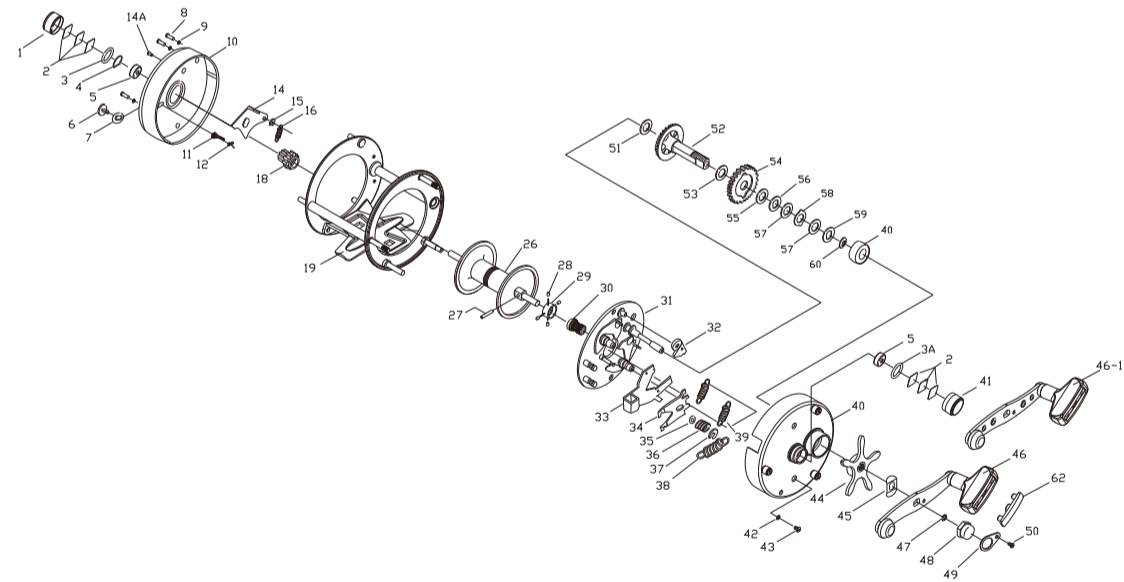
NO	Part Name	NO	Part Name	NO	Part Name
1	Left Cast control Cap	21	Line Guide	42	Protecting washer(x2)
2	Base Washer(x6)	22	Bushing	43	Screw(x2)
3	O-ring	23	Level wind assembly	44	Star drag
3A	O-ring	24	Level wind pawl	45	Spacer
4	Locking	25	Level wind nut	46	Single handle assembly
5	Ball Bearing(x2)	26	Spool assembly	46-1	Single handle assembly
6	Click switch	27	Pin	47	E.Clip
7	Washer	28	Brake pin	48	Handle nut
8	Screw(x3)	29	Brake centre assembly	49	Handle nut retainer
9	Washer(x3)	30	Pinion	50	Handle nut retainer screw
10	Left side plate	31	Brake Plate assembly	51	Spring washer
11	Click pawl	32	A/R pawl	52	Drive shaft assembly
12	Click pawl spring	33	Release trigger	53	Drive washer
13	Oscillation cog. wheel	34	Clutch arm	54	Main gear assembly
14	Click retainer	35	Washer	55	Drag washer
14A	Rivet	36	Coil spring	56	Key washer
15	E-Clip	37	Retainer	57	Drag washer
16	Spring	38	Spring to release trigger	58	Eared friction washer
17	Lock plate	39	Spring to lockhandle(x2)	59	Key washer
18	Line alarm cog wheel	40	Right side plate assembly + one-way bearing	60	Spring washer
19	Frame assembly	41	Right cast control cap	62	Handle knob cap
20	Worm shaft assembly				

7000CSM



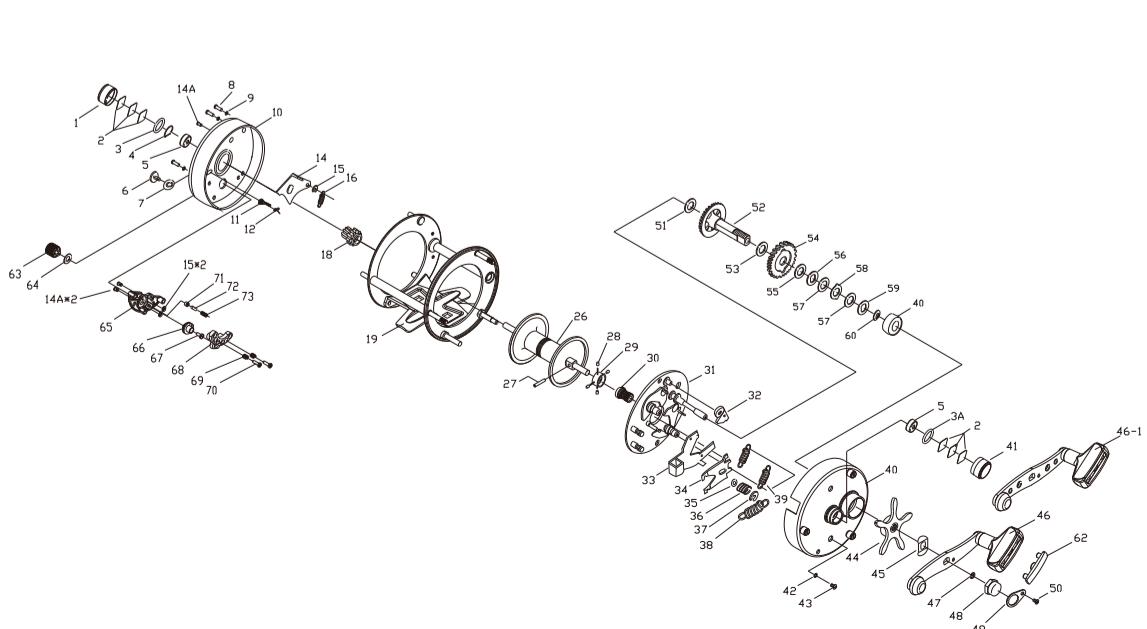
NO	Part Name	NO	Part Name	NO	Part Name
1	Left cast control cap	25	Level wind nut	49	Handle nut retainer
2	Base washer(x6)	26	Spool assembly	50	Handle nut retainer screw
3	O-ring	27	Pin	51	Spring washer
3A	O-ring	28	Brake pin	52	Drive shaft assembly
4	Locking	29	Brake centre assembly	53	Drive washer
5	Ball bearing(x2)	30	Pinion	54	Main gear assembly
6	Click switch	31	Brake plate assembly	55	Drag washer
7	Washer	32	A/R pawl	56	Key washer
8	Screw(x3)	33	Release trigger	57	Drag washer
9	Washer(x3)	34	Clutch arm	58	Eared friction washer
10	Left side plate	35	Washer	59	Key washer
11	Click pawl	36	Coil spring	60	Spring washer
12	Click pawl spring	37	Retainer	62	Handle knob cap
13	Oscillation cog. wheel	38	Spring to release trigger	63	Switch
14	Click retainer	39	Spring to lockhandle(x2)	64	Washer
14A	Rivet	40	Right side plate assembly + one-way bearing	65	Magnetic seat
15	E-Clip	41	Right cast control cap	66	Lifter
16	Spring	42	Protecting washer(x2)	67	Screw
17	Lock plate	43	Screw(x2)	68	Magnetic assembly
18	Line alarm cog wheel	44	Star drag	69	Spring (x2)
19	Frame assembly	45	Spacer	70	Screw (x2)
20	Worm shaft assembly	46	Single handle assembly	71	Click
21	Line guide	46-1	Single handle assembly	72	Pin
22	Bushing	47	E.Clip	73	Spring
23	Level wind assembly	48	Handle nut		
24	Level wind pawl				

7000CT



NO	Part Name	NO	Part Name	NO	Part Name
1	Left cast control cap	26	Spool assembly	44	Star drag
2	Base Washer(x6)	27	Pin	45	Spacer
3	O-ring	28	Brake pin	46	Single handle assembly
3A	O-ring	29	Brake centre assembly	46-1	Single handle assembly
4	Locking	30	Pinion	47	E.Clip
5	Ball bearing(x2)	31	Brake plate assembly	48	Handle nut
6	Click switch	32	A/R pawl	49	Handle nut retainer
7	Washer	33	Release trigger	50	Handle Nut Retainer screw
8	Screw(x3)	34	Clutch arm	51	Spring washer
9	Washer(x3)	35	Washer	52	Drive shaft assembly
10	Left side plate	36	Coil spring	53	Drive washer
11	Click pawl	37	Retainer	54	Main gear assembly
12	Click pawl spring	38	Spring to release trigger	55	Drag washer
14	Click retainer	39	Spring to lockhandle(x2)	56	Key washer
14A	Rivet	40	Right side plate assembly + one-way bearing	57	Drag washer
15	E-Clip	41	Right cast control cap	58	Eared friction washer
16	Spring	42	Protecting washer(x2)	59	Key washer
18	Line alarm cog wheel	43	Screw(x2)	60	Spring washer
19	Frame assembly			62	Handle knob cap

7000CTM



NO	Part Name	NO	Part Name	NO	Part Name
1	Left cast control cap	30	Pinion	51	Spring Washer
2	Base washer(x6)	31	Brake Plate assembly	52	Drive Shaft Assembly
3	O-ring	32	A/R pawl	53	Drive washer
3A	O-ring	33	Release trigger	54	Main gear assembly
4	Locking	34	Clutch arm	55	Drag washer
5	Ball bearing(x2)	35	Washer	56	Key washer
6	Click switch	36	Coil spring	57	Drag washer
7	Washer	37	Retainer	58	Eared friction washer
8	Screw(x3)	38	Spring to release trigger	59	Key washer
9	Washer(x3)	39	Spring to lockhandle(x2)	60	Spring washer
10	Left side plate	40	Right side plate assembly + one-way bearing	62	Handle knob cap
11	Click pawl	41	Right cast control cap	63	Switch
12	Click pawl spring	42	Protecting washer(x2)	64	Washer
14	Click retainer	43	Screw(x2)	65	Magnetic seat
14A	Rivet(x3)	44	Star drag	66	Lifter
15	E-Clip(x3)	45	Spacer	67	Screw
16	Spring	46	Single handle assembly	68	Magnetic Assembly
18	Line alarm cog wheel	46-1	Single handle assembly	69	Spring (x2)
19	Frame assembly	47	E.Clip	70	Screw(x2)
26	Spool assembly	48	Handle nut	7	Click
27	Pin	49	Handle nut retainer	72	Pin
28	Brake pin	50	Handle nut retainer screw	73	Spring
29	Brake centre assembly				